

TealWheel User's Manual



Program Version 1.61
Last Updated: July 17, 2009

Table of Contents

Introduction	1
<i>Description.....</i>	1
<i>Installing</i>	2
Windows Install	2
Manual Install.....	2
<i>Terminology</i>	2
Chapter 1 – Quick Start	3
<i>Introduction</i>	3
The Icon Wheel	3
The Configuration Screen	3
Chapter 2 – The Icon Wheel	4
<i>Overview</i>	4
Icons	4
Central Hub.....	4
Home Icon	4
<i>Navigation (5-way).....</i>	5
<i>Navigation (stylus).....</i>	5
Spin Mode	5
Select Mode	5
<i>Navigation (keyboard).....</i>	6
Chapter 3 – The Configuration Screen.....	7
<i>Mapping Icons.....</i>	7
None	7
History	7
Applications	8
Function – Brightness	8
Function – Find	8
Function – Home.....	8
Function – Lock and Off.....	8
Function – Power Off	8
Function – Toggle Radio	8
Function – Cut.....	9
Function – Copy	9
Function – Paste	9
Function – Undo.....	9
Navigation – Wheel List	9
Navigation – Previous Wheel.....	9
Navigation – Next Wheel.....	9
Navigation – Wheel A-H.....	9
<i>Moving Icons.....</i>	10
<i>Deleting Icons</i>	10
<i>Button Activation</i>	11
Hardware Button / Hardware Button Hold	11
Other Home Button/Icons	11
Opt + Hard Button	11

Favorites/ Voice	11
Aux Button / Hold	11
<i>Stroke Activation</i>	12
Enable up-stroke	12
Allow icon selection an activation during stroke	12
Change wheels when held at sides	12
<i>Navigation Prefs</i>	13
When trying to move beyond the wheel edge	13
Initial highlight position	13
Reset highlight on wheel change	13
<i>History Prefs</i>	14
History icons start at	14
And Move back in Time...	14
<i>Special Prefs</i>	14
Pass through activation app buttons	14
Show preview panel	14
Show preview panel in front	14
Show previews for history only	14
Show app name if no preview	15
Show background panel	15
Show shadow behind panel	15
Save rotation between sessions	15
Save rotation between wheels	15
Show icon containers	15
Square icon containers	15
<i>Wheel Prefs</i>	16
Wheel Visibility / Names	16
Allow spinning with stylus	16
Moving wheels	16
<i>System Prefs</i>	16
Stroke detect priority	16
<i>Colors</i>	16
<i>Button Activation Apps</i>	17
<i>Stroke Activation Apps</i>	17
<i>Card App Folders</i>	17
Chapter 5 – Customizing Icons	18
Importing Icons	18
Exporting Icons	18
Default Icon	18
Refresh Apps	18
Chapter 6 – Creating a Custom Icon Packs	19
<i>Using TealPaint</i>	19
<i>Using the TealPoint Image Manager</i>	20
Appendix A – Revision History	21
Appendix B – Contact Info	22
Appendix C – Registering	22
Appendix D – Products	22
Appendix E – Legal Notice	26

Introduction

Description

Thank you for trying TealWheel.

Contents

This archive contains the following files:

Program files:

TEALWHL.PRC
TPSETUP.EXE

The TealWheel program file
Windows easy-installer

Document files:

WHLDOC.PDF
WHLDOC.HTM
WHLDOC.PRC
REGISTER.HTM
REGISTER.TXT

This document in Adobe Acrobat (PDF) format
This document in HTML format (sans images)
This document in TealDoc format
TealPoint Registration form in HTML format
TealPoint Registration form in text format

Installing

Windows Install

Under Windows, run TPSETUP.EXE and follow the on-screen prompts

Manual Install



Use the Palm Install Tool (“Quick Install”) to install the file:

- **TEALWHL.PRC**

The Palm Install Tool comes installed on your desktop computer as part of your original software package, and is accessible from the Palm Desktop program as an icon on the left hand side.

This document also comes as a Palm document file **WHLDOC.PRC**, which you can optionally install and view with our document reader TealDoc.

Terminology

This manual uses the following terminology:

buttons

Rounded, rectangular areas on the Palm display screen that you can tap on with a stylus.

hardware buttons

Physical pushbuttons on you device/phone case that you can depress with your finger

application buttons

The row of two or four hardware buttons that are typically configured to launch frequently used applications

5-way control

The directional rocker switch located below the device display

silkscreen buttons

Buttons located in a physical or virtual graffiti text entry area, if present

non-volatile memory

A memory technology that does not lose data even after complete power loss. In modern PalmOS handhelds, NAND flash memory chips are used.

NVFS

Palm’s non-volatile file system, the part of PalmOS which uses a fixed block of normal RAM memory to speed up access to data stored in NAND flash memory.

DBCACHE

The fixed block of normal RAM memory used by NVFS to speed up file access.

Chapter 1 – Quick Start

Introduction

Taking pop-up launchers like the TealOS wave launcher one step further, TealWheel gives you instant access to your applications. Sporting a powerful yet intuitive interface, TealWheel can pop up while you're still inside another application, providing access to numerous applications, preview images, and even useful functions like copy, paste, and global find.

The Icon Wheel



The main TealWheel interface consists of a circular wheel of 12 icons, each of which can be mapped to an application, function, or navigation command. The wheel will open from within any application at the press of a button.

You can create up to eight independent named wheels, and switch between them to find the app you want. **(New in 1.50)**

The Configuration Screen

To select applications or commands for each wheel icon, run the main TealWheel program to bring up the *Configuration Screen*. Select any icon to choose a new function for that icon.



Chapter 2 – The Icon Wheel

When you run the main TealWheel program for the first time, TealWheel enables *Icon Wheel*, and maps it to open by default when you press the *Home* button on your device.

See the chapter *Settings and Options* for other optional ways to bring up the Icon Wheel.



Overview

Icons

The *Icon Wheel* consists of twelve icons arranged in a circle. Each icon represents a launchable application or special command.

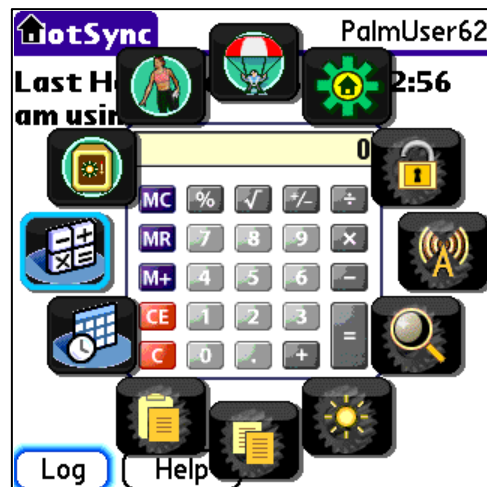
Central Hub

In the middle of the circle, the *central hub* will display a preview image of a selected application, or if no preview is available, it will display the following

- Current time
- Wheel name
- Battery level (**New in 1.50**)
- Date or name of a selected app or function.

Home Icon

In the upper left corner of the wheel, a small *home icon* is displayed. Tapping on this icon opens the standard application launcher. The *home icon* is particularly useful in case you map TealWheel to your device home button and have not mapped the launcher app to any icons in the *Icon Wheel*.



Navigation (5-way)

By default, the *central hub* is highlighted when you first open the *Icon Wheel*. To change the selection, use the 5-way navigator to move the current selection up, down, left for right. This will highlight the icons located at the four corresponding “compass points” in the wheel.

Once an icon is highlighted, you can move the highlight inward to move back to the center hub, or tangential to the wheel to rotate it to the next icon. For instance, if you highlight the leftmost icon, moving down will rotate the wheel clockwise, and moving up will rotate it counter-clockwise. Select the icon with the 5-way select button to execute the mapped function or open the corresponding app.

A special function can be executed if you move the highlight outwards from the wheel edge. Each of the four compass directions can be programmed to close the wheel, to change to another wheel, or to rotate the wheel in either direction. You can also program it to do nothing **(New in 1.50)**.

By default, moving right from the rightmost (3-o'clock) wheel switches to the next wheel, while moving left from the leftmost (9-o'clock) icon switches to the previous wheel in the wheel list. Moving the highlight up from the topmost icon lets you select a wheel by name. The specific command executed can be adjusted in the *Navigation Prefs* screen described in the *Settings and Options* chapter.



Navigation (stylus)

Alternatively, you can operate the Icon Wheel with a finger or stylus. To select an icon, simply tap on it. To browse through the contents of all icons TealWheel supports two operating modes, set in the *Wheel Prefs* screen described in the chapter *Settings and Options*:

Spin Mode

In Spin Mode, use a circular swiped gesture to rotate the wheel in either direction.

When the wheel is rotated, the icon highlight moves so that an icon in roughly the same location on the wheel (e.g. “9-o'clock” or “12-o'clock”, etc) is kept highlighted. This lets you preview the contents of different icons while you rotate the wheel.

Select Mode

In Select Mode, the wheel does not rotate when you move your finger or stylus. Instead, the current highlight moves to whatever icon is underneath your stylus. **(New in 1.50)**

You can also tap on special areas central hub. To easily change wheels, tap the right side of the central hub to move to the next wheel, or the left side to move to the previous one. Alternatively, you can tap in the center of the current wheel name to bring up the popup wheel list.



Navigation (keyboard)

TealWheel also supports shortcuts for activation with a keyboard. Navigation keys use letters in the number pad, entered in unshifted mode:

- R – Select 12:00 icon
 - T – Select 1:00 icon
 - Y – Select 2:00 icon
 - H – Select 3:00 icon
 - G – Select 3:00 icon
 - B – Select 4:00 icon
 - V – Select 5:00 icon
 - C – Select 6:00 icon
 - X – Select 7:00 icon
 - Z – Select 8:00 icon
 - S – Select 9:00 icon
 - D – Select 9:00 icon
 - W – Select 10:00 icon
 - E – Select 11:00 icon
-
- F – Return to center hub
 - P – Purge current icon (if history icon)
-
- Spacebar – Go to next wheel
 - Backspace – Go to previous wheel
 - Menu – Popup wheel menu
 - Enter – Select current choice
-
- Treo/Centro volume up – Rotate wheel clockwise
 - Treo/Centro volume down – Rotate wheel counter-clockwise

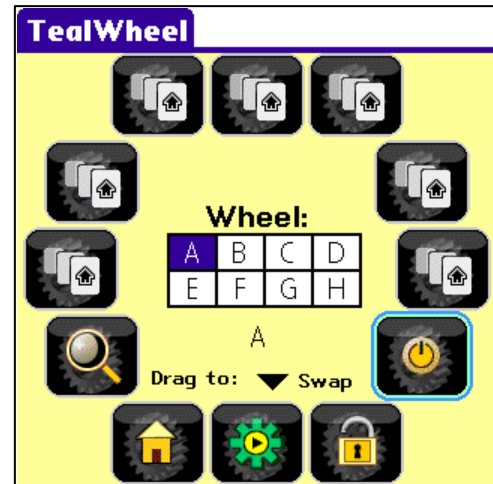


NOTE1: If no icon is selected, the Treo/Centro volume buttons move the current selection up or down. Only once an icon is selected will they rotate the wheel. **(New in 1.50)**

NOTE2: Under System Prefs menu, you can set your keyboard layout to “German” swap the functionality for the Y and Z keys. **(New in 1.50)**

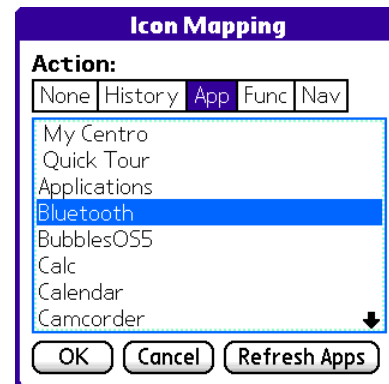
Chapter 3 – The Configuration Screen

The configuration screen opens whenever you run the main TealWheel program. On it, twelve buttons represent each of the 12 icons in the *Icon Wheel*, and five boxes labeled “A” through “H” represent each of eight separate wheel configurations you can set.



Mapping Icons

To choose an action for an icon, select its button to bring up the *Icon Mapping* screen. You can choose from the following mappings:



None

The icon is left blank and performs no action when selected.



History

The icon is automatically mapped to one of the 12 most recently run applications. A preview image is stored for each application in the history list.

By default, history icons are filled in clockwise order starting with the bottom-most (6-o'clock) icon, so if the 6-o'clock icon will contain the last app run if mapped to the History action, 7-o'clock will contain the last app before that, etc.



Applications

Icons can be mapped to a specific application in main memory or on an SD card. For apps on a card, a bullet character (•) follows the app name. Applications already mapped to icons are followed by the letters of the wheels—in brackets—in which they appear (e.g. [ABC]).

In addition to applications, you may also select a DA-type desk accessory to be brought up. Desk accessories do not have their own icons, so they will come up with a standard DA icon which you can override in the *Select App Icons* screen. **(New in 1.50)**



NOTE: Desk accessories cannot be brought up inside the HotSync application or Blazer web browser due to a bug in PalmOS, which does not properly support the PACE emulation layer in these apps. Selecting an DA in these apps will have no effect.

Function – Brightness

Brings up the PalmOS brightness adjustment slider



Function – Find

Initiates a PalmOS Global Find operation.



Function – Home

Launches the full system launcher application



Function – Lock and Off

Locks the handheld and turns it off



Function – Power Off

Turns off the handheld



Function – Toggle Radio

Toggles a Palm Treo or Centro radio on or off



Function – Cut

Performs a PalmOS cut operation on an active text field



Function – Copy

Performs a PalmOS copy operation on an active text field



Function – Paste

Performs a PalmOS paste operation on an active text field



Function – Undo

Performs a PalmOS undo operation on an active text field



Navigation – Wheel List

Brings up popup list to select a new wheel by name



Navigation – Previous Wheel

Selects the previous wheel (by letter)



Navigation – Next Wheel

Selects the next wheel (by letter)



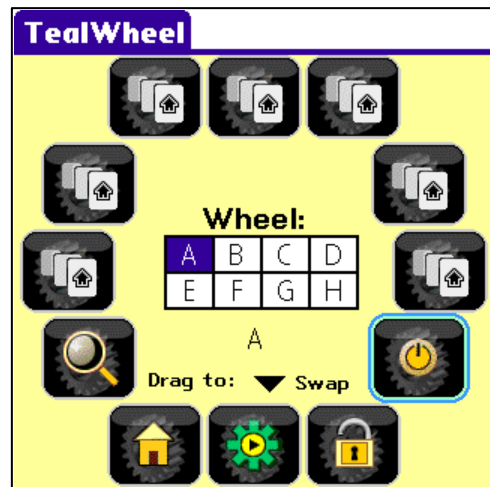
Navigation – Wheel A-H

Selects a specific wheel by letter



Moving Icons

By dragging icons, you can rearrange them or easily copy their mappings between icons or between wheels. **(New in 1.61)**



To move icons, simply drag them from one spot to another. Icons can be dragged to another icon on the same wheel, or to one of the wheel letter-boxes, which operates on the dragged icon's counterpart on another wheel.

Dragging can operate in two modes, selectable from the pick list at the bottom of the Configuration Screen. In "Swap" mode, the dragged icon will switch places with its counterpart. In "Copy" mode, however, the dragged icon's settings will be duplicated onto the target icon slot.

Deleting Icons

To easily "Delete" an icon (set it to a "none" mapping), simply drag the icon to an unused space while in "Swap" dragging mode.

Chapter 4 – Settings and Options

Adjust preferences in TealWheel with the following menus:

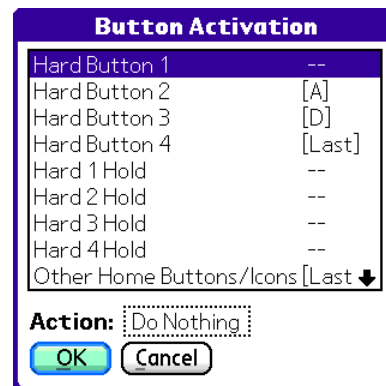
Button Activation

The *Button Activation* screen sets which button presses can be used to open the *Icon Wheel*: To map a button, select its entry in the list and choose an action from the “Action” box below. Each button can be independently set to either open up one of the eight wheel configurations or to open the last wheel opened. **(New in 1.50)**

Hardware Button / Hardware Button Hold

Most devices have four hardware application buttons that are mapped to applications. Use this option to map a press of the button or a long press (hold) to TealWheel instead.

NOTE: On the Treo 650, Hardware buttons 1 and 4 are respectively used for dialing and power buttons. On the Palm Centro, the four hardware buttons are arranged in a “U” order with (1) in the upper left and (4) in the upper right. Button 4 is mapped by default as a home button. Devices like the LifeDrive and Palm TX without a separate dedicated home button typically use Hardware button 1 or 4 as a home button.



Other Home Button/Icons

Use this option to map a press of a dedicated home button or software home icon to TealWheel. Devices with dedicated home buttons also have four separate application buttons.

NOTE: Under PalmOS, applications are not supposed to have an explicit “exit” menu or button. For the few who do, their “exit” buttons are actually software “home” buttons that bring up the system launcher. As such, these buttons will also bring up TealWheel if the *Other Home Button* activation option is enabled.

Opt + Hard Button

On a Palm Centro or Treo, use this option to map TealWheel to a press of a hardware button while holding down the option shift.

Favorites/ Voice

On other devices, a *Favorites* button (Tungsten E) or Voice Dial button (Tungsten T) can be mapped to TealWheel using this option. The favorites button generates the same key code as Opt+1 on a Treo/Centro.

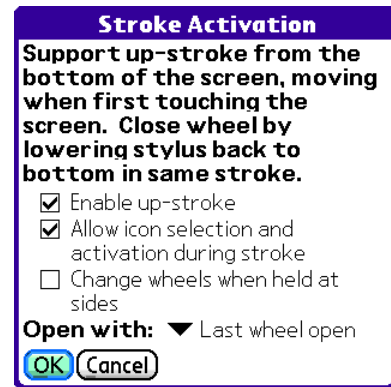
Aux Button / Hold

Maps TealWheel respectively to a short or long press of the extra side button on a newer Treo or Centro.

Stroke Activation

The *Stroke Activation* screen lets you bring up the Icon Wheel with a quick swipe up from the bottom of the screen.

(New in 1.50)



To do an up-stroke, do a quick swipe up from the bottom of the display. Start in the very bottom center of the display and be sure to have your finger/stylus moving when it first touches the screen. Move quickly and **Do Not Pause** before starting to move. If your device has a dedicated hardware text input area, you may begin the stroke within the text writing area.

The following options are available:

Enable up-stroke

Check this option to enable the up-stroke

Allow icon selection an activation during stroke

When this option is enabled, you can open the icon wheel and select an action in a single smooth motion. Simply hold the stylus down after completing the stroke, and move to an icon and release to select it. To close the wheel without selecting an icon, move the stylus back to the bottom of the screen before letting go.

Change wheels when held at sides

When this option is enabled, move the stylus to the left or right sides of the screen during your initial up-stroke and hold it there to cycle through the available wheels.

Navigation Prefs

Sets the following options:

When trying to move beyond the wheel edge

This option determines what action is performed when the 5-way navigator is used to move the highlighted square outward (away from center) past the wheel edge in each of the 4 compass directions. Choices include:

Rotate CCW

Rotate counter-clockwise

Rotate CW

Rotate clockwise

Close Wheel

Close the wheel with no further action

Previous Wheel

Open the previous wheel in the wheel list

Next Wheel

Open the next wheel in the wheel list

Wheel List

Open a list of wheels to select one by name

Do Nothing

Duh. **(New in 1.50)**



Initial highlight position

Determines which icon, if any, is automatically highlighted when the *Icon Wheel* is first opened.

Reset highlight on wheel change

Determines whether the initial highlight position set above is restored upon a wheel change. **(New in 1.50)**

History Prefs

The following options determine the order and direction in which a wheel's history icons (if any) are filled.

History icons start at

Selects the first history icon (top, bottom, left, or right). This icon holds the last application visited.

And Move back in Time...

Determines the direction (clockwise or counter-clockwise) in which the history icons are filled (from most recent to least recent).



Special Prefs

Sets the following special options:

Pass through activation app buttons

When this option is enabled and the *Icon Wheel* is open, if you press a hardware button that is mapped as an activation button, the button press will be passed on to the application underneath.

If this option is unchecked, pressing an activation button a second time will close the wheel with no action.

Show preview panel

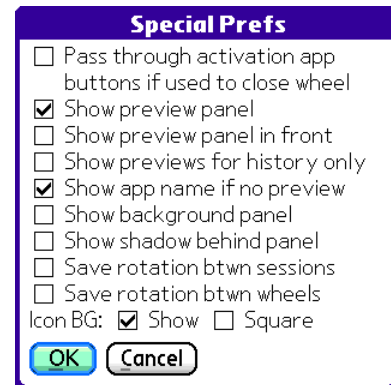
When this option is checked, a thumbnail screen image will be saved for every application when it is placed in the application history. When a corresponding history icon is selected, the preview image is shown in the *center hub*.

Show preview panel in front

If checked, the preview panel is shown in front of icons instead of behind.

Show previews for history only

If checked, the preview panel is not shown--even if available--for icons specifically mapped to an application and is only used for history icons. **(New in 1.50)**



Show app name if no preview

When this option is checked, the name of the selected icon's application or function is shown in the *center hub* if no preview is available.

Show background panel

Use this option to reduce screen "flashing" when changing selected icons. When enabled, add a blank preview panel is added underneath the *center hub* if no preview is available.

Show shadow behind panel

Use this option to enable or disable a circular shadow that appears behind the preview panel to help differentiate it from the background. **(New in 1.50)**



Save rotation between sessions

When this option is checked, the wheel rotation is kept between times you popup *Icon Wheel*. Otherwise, the wheel is reset to its initial position when the wheel is opened.

Save rotation between wheels

When this option is checked, the wheel rotation is kept when you change to another wheel. Otherwise, the wheel is reset to its initial position when switching to a new wheel.

Show icon containers

Uncheck this option to show bare icons alone without their "container" rectangles.

Square icon containers

Check this option to show icons cropped to a square background instead of the default rectangles. Only standard app icons are cropped—any custom ones you've selected are assumed to be the way you want it and are left as is. **(New in 1.50)**



Wheel Prefs

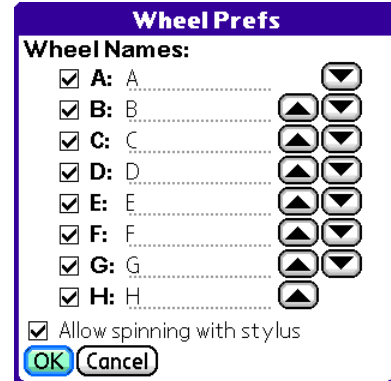
Sets the following special options:

Wheel Visibility / Names

Allows you to select which wheels are enabled and to choose a custom name for each wheel.

Allow spinning with stylus

When enabled, the stylus operates in *Spin Mode*, rotating the wheel while keeping the highlight in the same relative position. When disabled, the stylus operates in *Select Mode*, highlighting whatever icon is beneath the stylus. **(New in 1.50)**



Moving wheels

Select the up or down arrows next to a wheel name to reorder wheels, moving the selected wheel up or down in the wheel list. **(New in 1.61)**

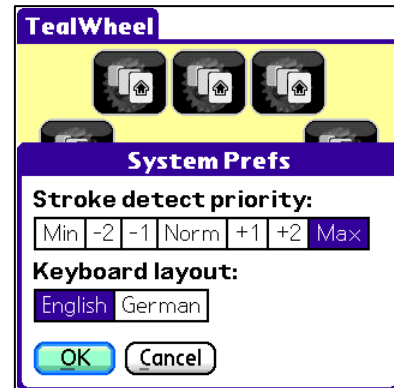
System Prefs

Stroke detect priority

By adjusting priority at which TealWheel handles events and detects pen strokes, you can resolve some conflicts between TealWheel and other apps, like text input utilities that read strokes themselves. **(New in 1.50).**

Set TealWheel to a higher priority to overcome situations when you can't bring up the Icon Wheel with an up-stroke when another app is active, or to a lower priority when you the *Icon Wheel* is coming up when you want another background app instead.

TIP: You may not be able to resolve a conflict if you are trying to set TealWheel to the minimum or maximum priority and the interfering app is already at that same priority. When two apps are set to the same priority it is unpredictable which one will receive pen strokes.



Colors

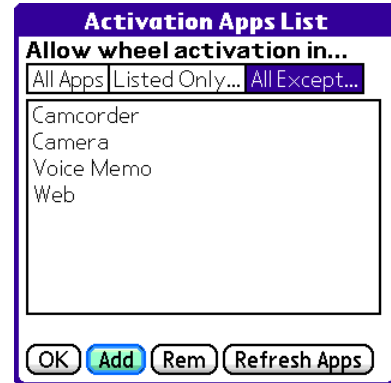
Use the **Colors** menu item to select the color scheme used by the center hub, its elements, and icon background containers. **(New in 1.50).**



Button Activation Apps

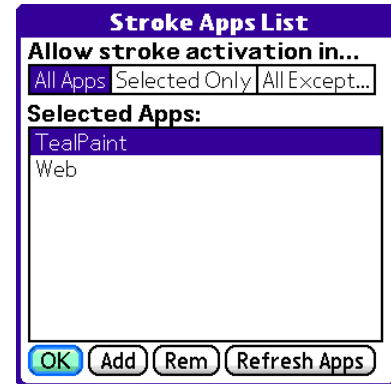
The *Button Activation Apps* screen lets you limit which apps support bringing up the *Icon Wheel* by button. Use it to restrict the wheel from apps that use incompatible display modes or use a selected activation button for a custom purpose.

Select the *Add* button to add applications, or the *Rem* button to remove a selected app from the list. When the *All Except* box is selected, the *Icon Wheel* is disabled within apps on the list. When *Listed Only* is selected, the *Icon Wheel* is supported only in the indicated apps.



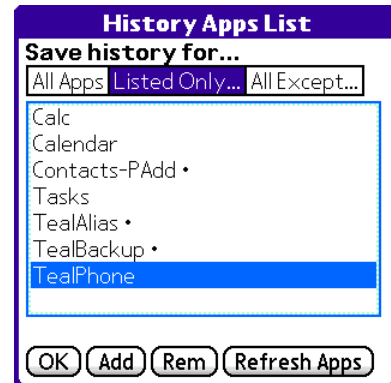
Stroke Activation Apps

The *Stroke Activation Apps* screen lets you limit which apps support the up-stroke. Use it to restrict the wheel from apps that use incompatible display modes or use a similar pen stroke for drawing or other actions. **(New in 1.50)**



History Apps List

The *History Apps List* lets you restrict which apps get added to the history of recently-run applications. Similar to their counterparts on the *Activation Apps List*, the *All Except* and *Listed Only* boxes respectively exclude apps from the history list or limit history only to the selected apps.



Card App Folders

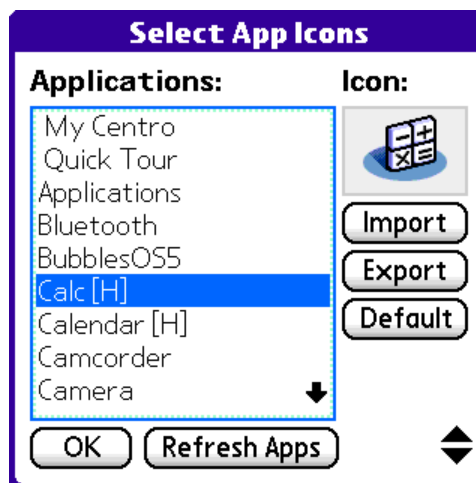
TealWheel supports applications stored on external storage cards and internal storage (USB) volumes. By default, the program searches in the "/PALM/Launcher" folder, which is the location used by the standard Palm Launcher. Using the *Card App Folders* screen, however, you can specify additional folders where application files may be stored.



Chapter 5 – Customizing Icons

With TealWheel, you can use **Icon Sets** to replace the icons used for applications or built-in functions.

To replace icons, select the **Select App Icons** or **Select Func Icons** item from the *Look* menu. A window will open presenting a list of applications or functions with the following options:



Importing Icons

Icon Sets contain images in TealPaint Image Database format. Each icon is stored individually as a separate 60 x 52 pixel, 8-bit image (30 x 26 in low-resolution). If an image is larger, only the upper left corner is used.

Select the *Import* button to load a replacement icon from an *Icon Set*. In the subsequent screen, select the **Load** button to open an *Icon Set*, **Edit** to edit a loaded *Icon set* (if TealPaint is installed), or tap on an icon to import it.

Exporting Icons

Select the *Export* button to save an icon already linked to an application as a new image in an *Icon Set*.

Default Icon

Select the *Default* button to revert an application to its internal default image.

Refresh Apps

Select this option to rescan the device to make sure the list of apps is current.



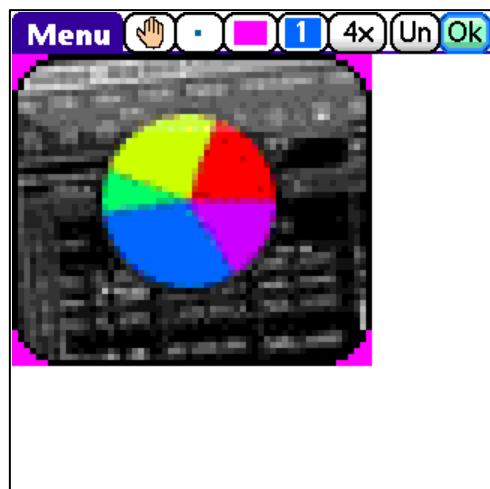
Chapter 6 – Creating a Custom Icon Packs

A custom icon pack is included in the TealWheel zip file. An icon pack is a TealPaint-format PDB image database. Each icon is stored as a separate 8-bit, 60x52 pixel image, and you can use TealPaint or its associated tools to edit this icon pack or create your own icon packs from scratch.

Using TealPaint

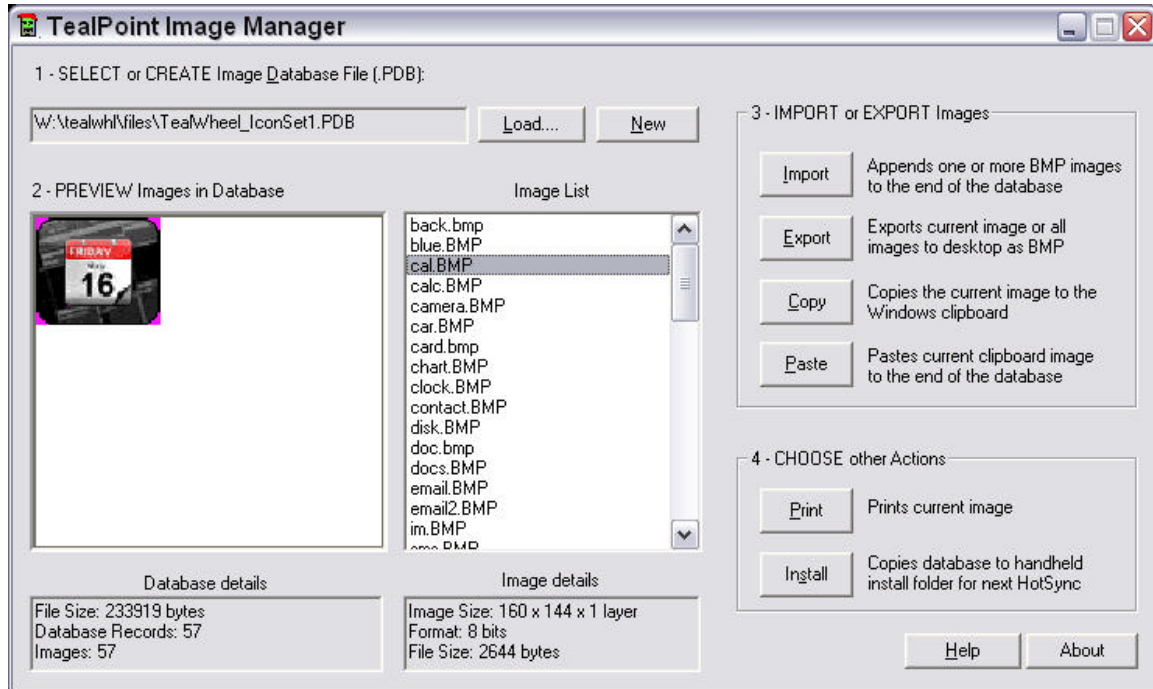
To edit an icon pack, simply open it up in TealPaint and edit each icon directly. Each icon appears as a separate editable image in the database. When creating your own icons, keep the following points in mind:

- Icons must be in 8-bit format because some applications run in 8-bit mode and the *Icon Wheel* must be compatible with these apps.
- Use pure magenta (FF00FF, palm color #5) for parts of the image you wish to be transparent. Don't use this color anywhere else.
- Icons should be 60 pixels wide and 52 pixels high for low-resolution devices, and 30 pixels wide and 26 pixels high for low resolution ones. If your image is larger, only the upper left corner is used.



Using the TealPoint Image Manager

On a PC, you can use the TealPoint Image Manager that comes inside the TealPaint zip file to create an Icon Set from images you've created in Photoshop or other image editing software.



Build icons as 60x52 pixel images, using pure magenta (red=255, green=0, blue=255) for transparency. Create a new database, then importing icons into them from BMP files or pasting them from the clipboard. When importing them, be sure to select 8-bit mode.

Please refer to the TealPaint Manual for further information on using the TealPoint Image Manager.

Appendix A – Revision History

Version 1.61 - July 17, 2009

- Added ability to reorder wheels using new buttons in wheel prefs screen
- Added ability to reorder icons in wheels by dragging them to new location on main config screen
- Added ability to swap icons in config screen with counterpart in other wheels by dragging them to another wheel's letter.
- Added ability to delete icons (set to no action) by dragging them to unused spot when in "swap" mode
- Added option to copy icons instead of swapping them when dragging on main screen
- Improved 5-way nav selection to wait for button release before launching
- Fixed appearance of tiny font used for app names when wheel popped up in Blazer web browser
- Fixed strange crash opening wheel reported by one user

Version 1.50 – May 26, 2009

- Added ability to open wheel with up-swipe from bottom of screen
- Added ability to assign specific wheels to each trigger button (up-stroke mapped separately)
- Added ability to launch DA's
- Added ability to select custom icons for functions and apps
- Added ability to select separate custom colors for date and label
- Added ability to set priority level of stroke/event handler
- Added battery indicator to wheel hub
- Added Graffiti select support to custom icon apps list
- Added option for square icon backgrounds (clips icons)
- Added option to "do nothing" when navigating beyond wheel edge
- Added option to allow or disallow wheel spin by stylus
- Added option to allow or disallow wheel switching by holding up-swipe at sides
- Added option to hide preview shadow
- Added option to set color of center hub to black or white
- Added option to set color of icon containers to black or white
- Added option to set color of icon highlight to blue or red
- Added option to set color of text items in hub
- Added option to show previews for history items only
- Added option to specify german keyboard (swaps y and z)
- Added 'Refresh Apps' button to icon mapping screen
- Added scroll buttons for custom icon apps list
- Added separate stroke activation inclusion/exclusion list
- Added support for more wheels (total=8)
- Improved colors of hub to use black, blue, and green scheme by default
- Improved built-in function icons to be more consistent with new theme and colors
- Improved center hub to use small font for date/label
- Improved custom icon screen to scroll icons by page instead of line
- Improved date display to override app name for one-second after opening wheel
- Improved program icon (again)
- Improved sample icon pack appearance
- Improved volume button controls to move highlight instead of rotating wheel if center selected
- Fixed ability to launch apps from user-defined card folders
- Fixed inclusion/exclusion apps list to draw properly if only one entry
- Fixed pen-up event on apps that call launcher from closing wheel
- Fixed to keep hidden apps from being added to history

Version 1.00 – April 26, 2009

- First debut on beta test page

Appendix B – Contact Info

TealWheel by TealPoint Software
©2009 All Rights Reserved.

TealPoint Software
454 Las Gallinas Ave #318
San Rafael, CA 94903-3618
We look forward to hearing from you.

Please visit us at www.tealpoint.com, or email us at contact@tealpoint.com.

Appendix C – Registering

Registering allows you to use the program past the 30-day expiration period and turns off registration reminders.

Currently, you may register by snail mail or online with a credit card and a secured server from the store where you downloaded the software. For the first option, send the following information on a sheet of paper separate from your payment.

- Product Name
- E-Mail Address (write clearly)
- HotSync User ID (Pilot Name Required for Passkey generation. It can be found on the main screen of the HotSync application on the Pilot as "Welcome _____" or in the corner on a PalmIII or higher)
- Check (drawn off a US Bank) or Money Order for (\$14.95 US). No international checks or money orders please.

Appendix D – Products

Visit us online for our complete product line, including:

SHORTCIRCUIT (<http://www.tealpoint.com/softshrt.htm>)

A new twist on game play fused from your all time action puzzle favorite games, connect falling conduit pieces into explosive loops in this frantic race against the clock.

SUDOKUADDICT (<http://www.tealpoint.com/softsudo.htm>)

Sudoku Addict brings to your handheld the addictive worldwide puzzle craze that has displaced crossword puzzles in many newspapers in Great Britain and Japan.

TEALAGENT (<http://www.tealpoint.com/softagnt.htm>)

Get news, movie times, stock quotes, driving directions, web pages and more without need for a wireless connection. TealAgent fetches and formats web-based content for offline viewing.

TEALALIAS (<http://www.tealpoint.com/softalia.htm>)

Free up memory and make the most of external expansion cards. Placeholder 'Alias' shortcut files automatically find, load, and launch apps and data from external SD cards, increasing free main memory.

TEALAUTO (<http://www.tealpoint.com/softauto.htm>)

Track and graph automobile mileage, service, and expenses with TealAuto, the complete log book for your car or any vehicle. Extensive customization options and unmatched in features and functionality.

TEALBACKUP (<http://www.tealpoint.com/softback.htm>)

Backup your valuable data with TealBackup, supporting manual and automatic backups to SD/MMC/CF cards and Memory Stick, backups through HotSync, and optional compression and encryption.

TEALDESKTOP (<http://www.tealpoint.com/softdesk.htm>)

Launch applications with TealDesktop, the themed replacement for the standard system launcher screen with tabs, multiple card folders, drag and drop, and more

TEALDIET (<http://www.tealpoint.com/softdiet.htm>)

Shape up your life with TealDiet, the diet, exercise, and personal tracking application for mobile devices. Lose weight, build more muscle, and live healthier with TealDiet.

TEALDOC (<http://www.tealpoint.com/softdoc.htm>)

Read, edit, and browse documents, Doc files, eBooks and text files with TealDoc, the enhanced doc reader. Extensive display and customization options; TealDoc is unmatched in features and usability.

TEALECHO (<http://www.tealpoint.com/softecho.htm>)

Improve your Graffiti text input speed and accuracy, seeing what you write with TealEcho digital "ink". No more writing blind!

TEALGLANCE (<http://www.tealpoint.com/softglnc.htm>)

See the time, date, upcoming appointments and todo items at power-up with TealGlance. The TealGlance pop-up utility and key guard comes up when you power up, letting you see your day "at a glance."

TEALINFO (<http://www.tealpoint.com/softinfo.htm>)

Lookup postal rates, area codes, tip tables, schedules, airports, and info from hundreds of free TealInfo databases. Create you own mini-apps; a handheld reference library.

TEALLAUNCH (<http://www.tealpoint.com/softlnch.htm>)

Launch applications instantly with the TealLaunch pop-up launcher and button/stroke-mapping utility. Map applications to button presses and pen swipes so you can get to your apps quickly.

TEALLOCK (<http://www.tealpoint.com/softlock.htm>)

Secure and protect your handheld with TealLock, the automatic locking program with encryption and card support. TealLock has unmatched features and customization options for personal or corporate use.

TEALMAGNIFY (<http://www.tealpoint.com/softlens.htm>)

Save your eyesight with TealMagnify, an ever-ready magnifying glass that works with most any program. TealMagnify lets you enlarge the screen for those times the text is too small to read.

TEALMASTER (<http://www.tealpoint.com/softmstr.htm>)

Replace Hackmaster with TealMaster, the supercharged 100%-compatible system extensions manager. TealMaster adds enhanced stability, configuration and diagnostic features and PalmOS 5.0 hack emulation.

TEALMEAL (<http://www.tealpoint.com/softmeal.htm>)

Save and recall your favorite restaurants with TealMeal, the personal restaurant database. With TealMeal's handy sorting and selection options, never ask "where to eat" again.

TEALMEMBRAIN (<http://www.tealpoint.com/softmemb.htm>)

Stop crashes and monitor your memory use with TealMemBrain, the application stack stabilizer. TealMemBrain boosts your stack space on OS3 and OS4 handhelds, eliminating causes of system instability.

TEALMOVER (<http://www.tealpoint.com/softmovr.htm>)

Beam, delete, rename, and copy files with TealMover, the file management utility for SD/CF/MS cards. TealMover lets you see, move, modify, hex edit, and delete individual files.

TEALMOVIE (<http://www.tealpoint.com/softmovi.htm>)

Play and convert high-quality video and synchronized sound with the TealMovie multimedia system. TealMovie includes a handheld audio/movie player and a Windows AVI/MPEG/Quicktime converter program.

TEALNOTES (<http://www.tealpoint.com/softnote.htm>)

Insert freehand graphics anywhere with TealNotes "sticky notes" for Palm OS. TealNotes can be inserted into memos, to-do lists, address book entries--almost anywhere you currently have editable text.

TEALPAINT (<http://www.tealpoint.com/softpnt.htm>)

Paint, sketch, or draw with TealPaint, the all-in-one mobile graphics paint program and photo editor. Highlights include 25 tools, 32 patterns, 49 brushes, zoom, layers, undo, & JPEG/GIF/BMP support.

TEALPHONE (<http://www.tealpoint.com/softphon.htm>)

Supercharge the address book with TealPhone, the contacts replacement with superior interface and options. Highlights include enhanced display, search, phone-dialing, groups, and linking.

TEALPRINT (<http://www.tealpoint.com/softprnt.htm>)

Print text and graphics to IR, serial, and Windows printers with TealPrint. With numerous connection options, TealPrint, is the all-in-one text and graphic printing solution.

TEALSAFE (<http://www.tealpoint.com/softsafe.htm>)

Store your passwords, credit cards, PIN numbers, and bank accounts in the TealSafe data wallet. With maximum security and encryption, TealSafe is a must for features and security.

TEALSCAN (<http://www.tealpoint.com/softscan.htm>)

Keep your device stable, up-to-date, and running smoothly with TealScan, the comprehensive system utility for PalmOS handhelds

TEALSCRIPT (<http://www.tealpoint.com/softscrp.htm>)

TealScript adds Graffiti text input to Treo and Centro smart phones. For devices that already support Graffiti, TealScript adds a trainable system that supports both multi-stroke and Graffiti-1.

TEALTRACKER (<http://www.tealpoint.com/softtrac.htm>)

Track time and expenses with a fast, easy to use interface that requires minimal effort. Generate reports and export data to a spreadsheet. TealTracker is your personal time clock.

TEALTOOLS (<http://www.tealpoint.com/softtool.htm>)

Improve productivity with TealTools pop-up Palm Desk Accessories. TealTools includes a popup calculator, clock/stopwatch, preferences panel, editing panel, memopad, and a file/backup manager.

Appendix E – Legal Notice

We at TealPoint Software are committed to providing quality, easy-to-use software. However, this product is provided without warranty and the user accepts full responsibility for any damages, consequential or otherwise, resulting from its use.

This archive is freely redistributable, provided it is made available only in its complete, unmodified form with no additional files and for noncommercial purposes only. Any other use must have prior written authorization from TealPoint Software.

Unauthorized commercial use includes, but is not limited to:

- A product for sale.
- Accompanying a product for sale.
- Accompanying a magazine, book or other publication for sale.
- Distribution with "Media", "Copying" or other incidental costs.
- Available for download with access or download fees.

This program may be used on a trial basis for 30 days. The program will continue to function afterwards. However, if after this time you wish to continue using it, please register with us for the nominal fee listed in the program.

Thank you.

CUSTOMER LICENSE AGREEMENT

YOU ARE ABOUT TO DOWNLOAD, INSTALL, OPEN OR USE PROPRIETARY SOFTWARE OWNED BY TEALPOINT SOFTWARE, INC. CAREFULLY READ THE TERMS AND CONDITIONS OF THIS END USER LICENSE BEFORE DOING SO, AND CLICK BELOW THAT YOU ACCEPT THESE TERMS.

1. License. You are authorized to use the Software Product owned and developed by TealPoint Software, Inc. on a single hand-held computing device on a trial basis for thirty (30) days. If after 30 days you wish to continue using it, you are required to register with TealPoint and pay the specified fee. This license is not exclusive and may not be transferred. You may make one copy of the Software for back-up and archival purposes only.
2. Ownership. You acknowledge that the Software Product is the exclusive property of TealPoint Software, Inc, which owns all copyright, trade secret, patent and other proprietary rights in the Software Product.
3. Restrictions. You may NOT: (a) decompile or reverse engineer the Software Product; (b) copy (except as provided in 1 above) sell, distribute or commercially exploit the Software product; or (c) transfer, assign or sublicense this license.
4. Disclaimer of Warranty and Liability. TEALPOINT MAKES NO WARRANTY, EXPRESS OR IMPLIED, AS TO THE ACCURACY, COMPLETENESS OR FUNCTIONING OF THE LICENSED SOFTWARE, INCLUDING WITHOUT LIMITATION, WARRANTIES OF MERCHANTABILITY OR OF FITNESS FOR A PARTICULAR PURPOSE, ALL OF WHICH TEALPOINT DISCLAIMS. ALL LIABILITY IS DISCLAIMED AND TEALPOINT ASSUMES NO RESPONSIBILITY OR LIABILITY FOR LOSS OR DAMAGES OF ANY KIND, DIRECT OR INDIRECT, INCIDENTAL, CONSEQUENTIAL OR SPECIAL, ARISING OUT OF YOUR USE OF THE LICENSED SOFTWARE, EVEN IF ADVISED OF THE POSSIBILITY THEREOF.
5. Termination. You may terminate this Agreement at any time by destroying your copy(ies) of the Software Product. The Agreement will also terminate if you do not comply with any of its terms and conditions, at which time you are required to destroy your copy(ies) of the Software Product and cease all use.
6. Applicable Law. This Agreement is governed by the laws of the State of California.